

**LIFTEK**  
SUPPLIED BY **SHS**

## VERSATRUK F1 CLASSIC

FULLY ELECTRIC  
PALLET TRUCK

**1500KG**

PRODUCT CODE

19330



- Optimised for Heavy-Duty Applications
- Fully Electric
- Gel Battery with Integrated Charger

The VERSATRUK F1 CLASSIC is a highly efficient, cost-effective solution for businesses requiring durable, reliable handling equipment in industrial and rugged environments. Designed with innovative features and a platform-based approach, it combines practicality with versatility to meet various operational needs.

**SHS**  
HANDLING SOLUTIONS

0800 619 0800  
SALES@SHS-HANDLING.COM

SHSHANDLING  
SOLUTIONS  
.COM

SHS HANDLING SOLUTIONS LTD, ELEVATION HOUSE, UNIT G1-G3, BOROUGH ROAD, BUCKINGHAM INDUSTRIAL ESTATE, BRACKLEY, NN13 7BE

## VERSATRUK F1 CLASSIC - A durable truck for industrial applications

The F1 CLASSIC features an integrated charger and 24V/65Ah AGM battery for industrial needs and drive unit for endurance and stability.

This product is an optimised solution for those who undertake heavy-duties in rugged scenarios.



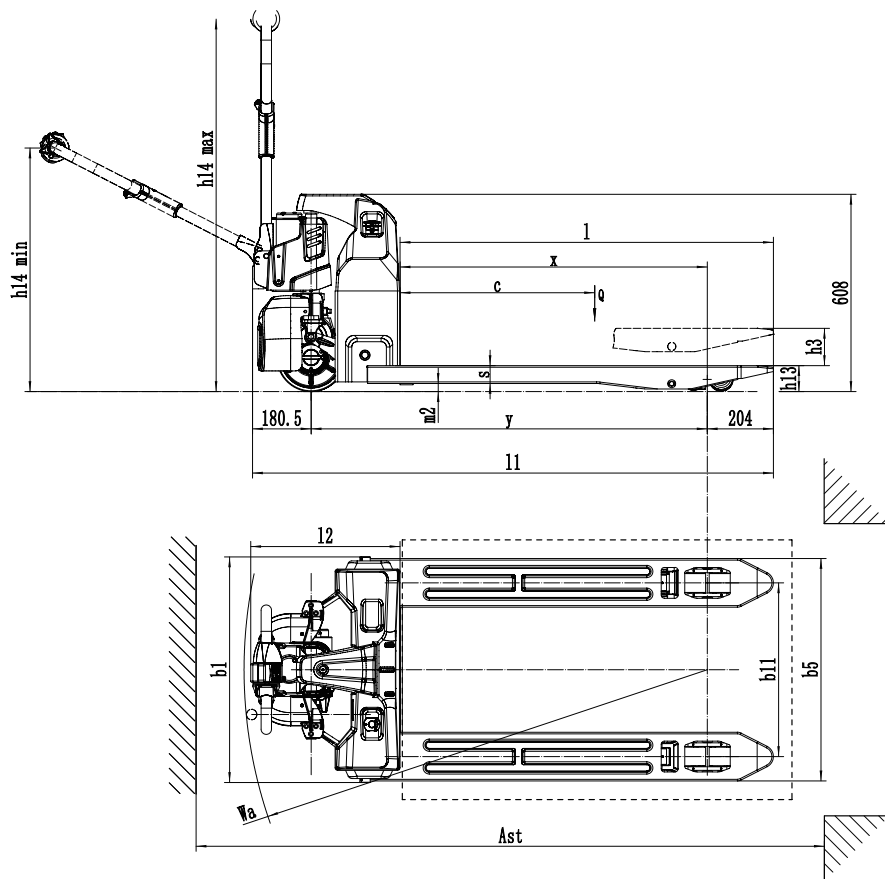
### VERSATILE DESIGN

The F1 CLASSIC is built on a versatile platform that makes it easy to configure the truck to your specific needs. Available with optional items, such as fork width, load wheel type, battery capacity, charge and vertical handler working.

Its innovative design ensures flexibility, offering equipment solutions that adapt to meet your operational requirements.

DISTINGUISHING MARK	1.1	Manufacturer			LIFTEK
	1.2	Model designation			F1 CLASSIC
	1.3	Drive			Electric
	1.4	Operator type			Pedestrian
	1.5	Load capacity	Q	kg	1500
	1.6	Load center distance	c	mm	600
	1.8	Load distance, centre of drive axle to fork	x	mm	883/946
	1.9	Wheelbase	y	mm	1157/1220
	SERVICE WEIGHT	2.1	Service weight		kg
2.2		Axle loading, laden front/rear		kg	540/1105
2.3		Axle loading, unladen front/rear			115/30
TYRES/CHASSIS	3.1	Tyre type		mm	Polyurethane
	3.2.1	Tyre size, front		mm	210×70
	3.3.1	Tyre size, rear		mm	Φ80×60 (Φ74×88)
	3.4	Additional wheels (castor wheels)		mm	Φ74×30(Optional)
	3.5	Wheels, number front/rear (x drive wheels)		mm	1× 2/4 (1× 2/2)
	3.6.1	Tread width, front	b19	mm	-
	3.7.1	Tread width, rear	b11	mm	410 (535)
DIMENSIONS	4.4	Lift height	h3	mm	105
	49	Height of tiller handle in drive position min./max.	h14	mm	750/1170
	4.15	Lowered height	h13	mm	82
	4.19	Overall length	l1	mm	1604
	4.20	Length to face of forks	l2	mm	450
	4.21	Overall width	b1/b2	mm	695/620
	4.22	Fork dimensions	s/e/l	mm	55/150/1150
	4.25	Distance between fork-arms	b5	mm	685/560
	4.32	Ground clearance, center of wheelbase	m2	mm	25
	4.34.1	Aisle width for pallets 1000× 1200 crossways	Ast	mm	2187
	4.34.2	Aisle width for pallets 800×1200 crossways	Ast	mm	2244
	4.35	Turning radius	Wa	mm	1426
	PERFORMANCE DATA	5.1	Travel speed, laden/unladen		km/h
5.2		Lifting speed, laden/unladen		m/s	0.02/0.026
5.3		Lowering speed, laden/unladen		m/s	0.069/0.055
5.8		Max. gradeability, laden/unladen		%	5/16
5.10		Service brake			Electromagnetic
ELECTRIC-ENGINE	6.1	Drive motor rating S2 60 min		kW	0.75
	6.2	Lift motor rating at S3 15%		kW	0.5
	6.4	Battery voltage/nominal capacity		V/Ah	12*2/65Ah
	6.5	Battery weight		kg	15*2
ADDITION DATA	8.1	Type of drive control			DC
	10.5	Steering design			Mechanical
	10.7	Sound pressure level at the driver's ear		dB(A)	<74

IF THERE ARE IMPROVEMENTS OF TECHNICAL PARAMETERS OR CONFIGURATIONS, NO FURTHER NOTICE WILL BE GIVEN. THE DIAGRAM SHOWN MAY CONTAIN NON-STANDARD CONFIGURATIONS.



## OPTION

No.	Optional items	F1
1.2	Fork width	•1150*560 ◦0560*900/1000/1220/1350/1500 ◦1150*685 ◦685**900/1000/1220/1350/1500
1.3	Fork lowered height	80
1.6	Drive cover off the ground	•45mm ◦65mm(Non-CE)
2.1	Load wheel type	•Double ◦Single
2.2	Load wheel material	•Polvurethane
2.3	Drive wheel material	•Polvurethane
2.7	Battery capacity	•24V 65Ah
2.8	Charger	•24V-10A Internal
2.9	Battery indicator	•Without time
3.12	Buzzer	•Yes and not customised
2.16	Handle head type	•Hands handle head
3.3	Castor wheels	•No ◦Yes and not customised
3.16	Vertical handler working	•Yes and not customised
4.8	Drive assembly	•Yes and not customised

Note: • Standard ◦ Optional - Inconformity

AT SHS, WE HELP COMPANIES MOVE GOODS SAFELY AND EFFICIENTLY BY DESIGNING, SUPPLYING, AND MAINTAINING MATERIALS HANDLING EQUIPMENT.